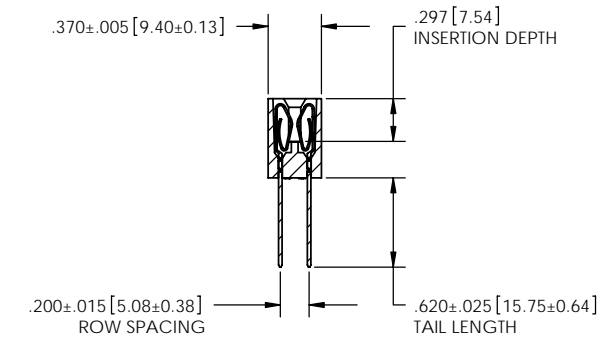
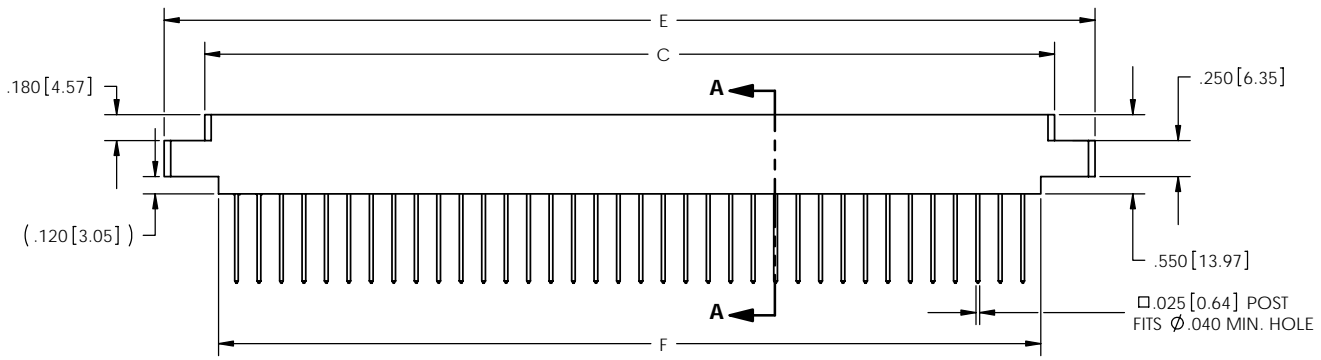
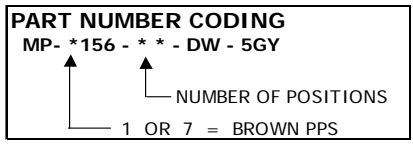
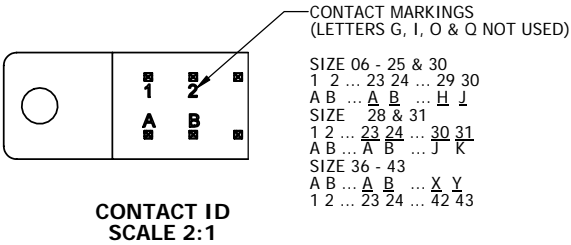


REVISIONS				
REV.	ECO. NO	DESCRIPTION	DATE	BY
A	573	INITIAL RELEASE	3/21/2005	AN
B	1191	CHANGE BODY P/N & UPDATED TO CURRENT CONFIGURATION	11/16/2006	MV



MP - \_ 156 - \_ - DW - 5GY

SECTION A-A



REF: AMM \_ \_ DSMH - S328

PART NUMBER	NO. OF POS.	INCHES						MILLIMETERS					
		A±.010	B±.010	C±.015	D±.010	E±.020	F±.015	A±0.25	B±0.25	C±0.38	D±0.25	E±0.51	F±0.38
MP- * 156-06-DW-5GY	6	0.780	1.102	1.221	1.534	1.784	1.030	19.81	27.99	31.01	38.96	45.31	26.16
MP- * 156-08-DW-5GY	8	1.092	1.414	1.533	1.846	2.096	1.342	27.74	35.92	38.94	46.89	53.24	34.09
MP- * 156-10-DW-5GY	10	1.404	1.726	1.845	2.158	2.408	1.654	35.66	43.84	46.86	54.81	61.16	42.01
MP- * 156-12-DW-5GY	12	1.716	2.038	2.157	2.470	2.720	1.966	43.59	51.77	54.79	62.74	69.09	49.94
MP- * 156-15-DW-5GY	15	2.184	2.506	2.625	2.938	3.188	2.434	55.47	63.65	66.68	74.63	80.98	61.82
MP- * 156-18-DW-5GY	18	2.652	2.974	3.093	3.406	3.656	2.902	67.36	75.54	78.56	86.51	92.86	73.71
MP- * 156-22-DW-5GY	22	3.276	3.598	3.717	4.030	4.280	3.526	83.21	91.39	94.41	102.36	108.71	89.56
MP- * 156-24-DW-5GY	24	3.588	3.910	4.029	4.342	4.592	3.838	91.14	99.31	102.34	110.29	116.64	97.49
MP- * 156-25-DW-5GY	25	3.740	4.062	4.181	4.494	4.744	3.990	95.00	103.17	106.20	114.15	120.50	101.35
MP- * 156-28-DW-5GY	28	4.212	4.534	4.653	4.966	5.216	4.462	106.98	115.16	118.19	126.14	132.49	113.33
MP- * 156-30-DW-5GY	30	4.524	4.846	4.965	5.278	5.528	4.774	114.91	123.09	126.11	134.06	140.41	121.26
MP- * 156-31-DW-5GY	31	4.680	5.002	5.121	5.434	5.684	4.930	118.87	127.05	130.07	138.02	144.37	125.22
MP- * 156-36-DW-5GY	36	5.460	5.782	5.901	6.214	6.464	5.710	138.68	146.86	149.89	157.84	164.19	145.03
MP- * 156-40-DW-5GY	40	6.084	6.406	6.525	6.838	7.088	6.334	154.53	162.71	165.74	173.69	180.04	160.88
MP- * 156-43-DW-5GY	43	6.552	6.874	6.993	7.306	7.556	6.802	166.42	174.60	177.62	185.57	191.92	172.77

\* SEE PART NUMBER CODING

- NOTES:
- INSULATOR MATERIAL: SEE PART NUMBER CODING
  - CONTACT MATERIAL: BERYLLIUM COPPER
  - PLATING: FINISH: .00050" NICKEL UNDERPLATE  
CONTACT SURFACE: .000030" GOLD  
TERMINATION: .000010" GOLD
  - OPERATING TEMPERATURE: -65°C TO +150°C
  - PROCESSING TEMP: 260°C FOR 120 SECONDS MAX
  - UL FLAMMABILITY RATING: 94V-0
  - VOLTAGE RATING: 1800 VDC MINIMUM AT SEA LEVEL.
  - CURRENT RATING: 3 AMP PER CONTACT PAIR
  - VOLTAGE DROP: 30 MILLI VOLT AT RATED CURRENT
  - INSULATION RESISTANCE: 5000 MEGA OHM
  - CONNECTOR IDENTIFICATION: THE PART SHALL BE MARKED WITH A PART NUMBER AND BARCODE
  - BOARD THICKNESS ACCOMMODATED: .062±.008"
  - BOARD INSERTION FORCE: 16 OZ MAX PER CONTACT PAIR WHEN USING A .062" TEST BLADE.
  - INTERNAL INSPECTION TO BE PER SULLIN'S WORK INSTRUCTION W17.3-01.
  - BOARD WITHDRAWAL FORCE: 1 OUNCE MINIMUM PER CONTACT PAIR USING .062" PCB



RoHS COMPLIANT

# CUSTOMER COPY

UNLESS OTHERWISE SPECIFIED: DIMENSIONS ARE IN INCHES[MM]		DATE	NAME
TOLERANCES: ANGULAR: ± 1° XX = ± .02 [ .508] .XXX = ± .005 [ .1270] XXXX = ± .0005 [ .0127] PARENTHEICAL INFORMATION IS FOR REFERENCE ONLY		DRAWN	ARIA
INTERPRET DIMENSIONS AND GEOMETRIC TOLERANCING PER: ANSI Y14.5-1984		THE INFORMATION HEREIN CONTAINS PROPRIETARY INFORMATION OF SULLINS ELECTRONICS AND IS NOT TO BE REPRODUCED, USED OR DISCLOSED TO OTHERS FOR ANY PURPOSE EXCEPT AS SPECIFICALLY AUTHORIZED BY WRITING BY AN OFFICER OF SULLINS ELECTRONICS.	
SULLINS ELECTRONICS		DESCRIPTION EDGECARD CONNECTOR	
PART NUMBER MP- _ 156 - _ - DW - 5GY		SIZE C	REV B
SCALE: 1.5:1		SHEET 1 OF 1	